

ROV-Hook

Subsea Hook

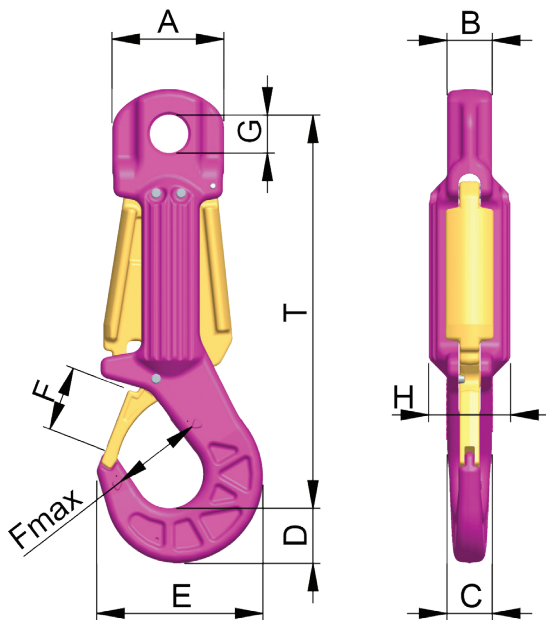
Product Features:

- The RUD ROV-Hook eliminates the risk of snagging and accidental rigging
- The outer profile is smooth with no protruding hook nose
- Outwards opening safety latch
- The safety latch automatically closes when the ROV releases the triggers
- The safety latch is securely locked in closed position
- The hook can be operated by all commonly used ROV manipulators, including the grabber
- The hook safety latch opening and closing can be operated by a single ROV manipulator
- The hook design minimizes the time the ROV takes to carry out the attachment/detachment operation

ROV-Hook 10t



ROV-Hook 25t



ROV-Hook

Type	Capacity (t)	Weight (kg/unit)	T (mm)	A (mm)	B (mm)	C (mm)	D (mm)	E (mm)	F (mm)	F Max (mm)	G (mm)	H (mm)	Model Number
ROV-HOOK 2.0 10t	10	13.7	393	112	45	45	55	166	65	99	38	82	7910553
ROV-HOOK 2.0 25t	25	26	484	132	55	55	92	249	96	130	52	82	7910554

IN STOCK

IN STOCK

Subject to technical changes!

The RUD ROV-Hook

Unique cost efficiency in marine and offshore lifting challenges

Did you know that RUD is also your lifting expert for marine, offshore and subsea applications? Our ROV-HOOK provides two efficient lifting solutions for demanding marine and offshore applications. Its innovative safety mechanism makes it impossible to accidentally open the hook. The additional version, with up to 25 tonnes of WLL, opens up completely new applications.

The RUD ROV-HOOK offers compelling advantages for marine and offshore tasks:

- 100% crack-tested, ensuring reliability and safety
- WLL ranging from 10 to 25 tons, suitable for heavy-duty applications
- No risk of shedding loads through innovative twin trigger mechanism
- Single handed operation
- No snagging, providing a safer and more efficient operation
- Safety factor of 4:1 based on the WLL, meeting rigorous safety standards

Twin trigger mechanism - ultimate safety:

- The hook only opens when both locking mechanisms are pressed simultaneously
- Ultimate safety: Accidental opening of the hook and loss of load are impossible

High resistance to external impacts

The hook features high-quality corrosion protection through a zinc flake coating, and its high wear resistance is achieved by increased heat treatment parameters. Additionally, the fastening screws are of a high strength class, offering excellent resistance to stress. The RUD ROV-HOOK is also repairable, further extending its lifespan and usability.

Top quality - Made in Germany

As a successful innovator in the field of lifting, moving and lashing loads, RUD sets technological benchmarks over and over again. We can offer clear added values in the demanding maritime & offshore sector, for example. An ever larger range of our lifting points and lifting means have been optimized for precisely these assignments and consequently have DNV approval.

**Reliable quality, high level of safety, perceptible added values:
Discover the world of RUD.**



Operating with all common ROV manipulators
The hook can be operated by all commonly used ROV manipulators, including the grabber.

Angles up to 30°
The hook can be approached at inclined angles up to 30° from the ideal gripping position perpendicular to hook flat side.

Outwards opening safety latch
The safety latch intermeshes with the hook nose.

The safety latch is securely locked in closed position
The safety latch automatically closes when the ROV releases the triggers.

Easy to operate
The hook safety latch opening and closing can be operated by a single ROV manipulator.

No snagging and accidental rigging
The RUD ROV-HOOK eliminates the risk of snagging and accidental rigging.

Designed for efficiency
The hook design minimizes the time the ROV takes to carry out the attachment/detachment operation

In-stock availability!
Choose the 10- or 25-metric ton unit — both IN STOCK!

Oceaneering International, Inc. Chooses RUD ROVs

Oceaneering International, Inc. (Oceaneering) started using RUD ROV hooks in 2020, working with Caldwell and our distributor LiftPull for contracts in the Gulf of Mexico

Installing long baseline transponder frames

First, Oceaneering used the hooks to install long baseline (LBL) transponder frames, weighing 2,000 lbs. each, at specified subsea locations. Oceaneering was contracted by a major offshore oil and gas company to deploy six LBL array Compatt frames (a transponder used for high precision survey and construction operations) and populate the array in 7,200 fsw using the 257 ft.-long multi-purpose support vessel (MSV), Connor Bordelon.

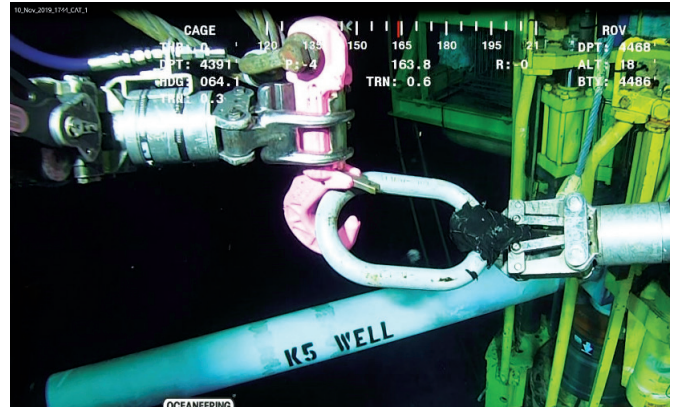
Installing jumper and subsea distribution hardware

In a second contract for another major oil and gas company, the ROV hooks were again used to install a rigid M-shape jumper and associated subsea distribution hardware. Here, the hooks were used to make several smaller lifts of ancillary equipment and frames, weighing between 5,500 lbs. and 10,000 lbs., in support of the jumper installation using the 309 ft.-long MSV Cade Candies.

Why choose RUD ROV?

Dan Cheek, engineering manager, Subsea Projects Group at Oceaneering, said: “We were looking for a safe and time-efficient solution to connect and disconnect loads subsea using a ROV. We needed something to reduce the risk of dropped objects, especially when passing through the water interface, and provide a user-friendly subsea solution. The alternative option would have been to use a ROV shackle in place of a ROV hook.”

The LBL Compatts allow for detailed acoustic positioning of subsea assets by surface vessels and tracking of the ROVs. Cheek explained that the frames hold the transponders upright subsea and off the seabed.



Installing long baseline transponder frames

Ruben Delgadillo, regional sales manager at LiftPull, said: “The safe lifting and lowering of loads on deck and underwater up to depths of up to 10,000 ft.—coupled with ambient conditions, unpredictable currents and difficult lighting—presents enormous challenges. Further, the sector is nearly always time pressured and precision is always fundamental to safety.”

He added: “The RUD ROV hook provides two efficient lifting solutions for demanding marine and offshore applications. Its innovative safety mechanism makes it impossible to accidentally open the hook. We serve as a DNV GL-qualified partner for marine and offshore applications with a comprehensive range of sling and lashing solutions.”

Regarding the higher-capacity, 25-tonne version of the ROV hook, Cheek said: “We intend to use the 10-tonne capacity hook for upcoming contracts; it is especially useful for deploying and recovering the ancillary equipment and frames required to complete many of our projects.



See the RUD ROV-HOOK on Caldwell's YouTube page

Learn everything you need to know about why marine professionals choose RUD for their ROV hooks. By eliminating shredding and snagging, you prioritize safety and speed. Best of all, Caldwell has 10t and 25t sizes in stock now.

