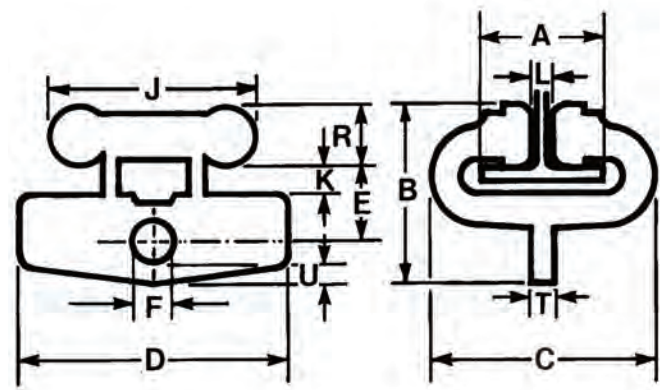
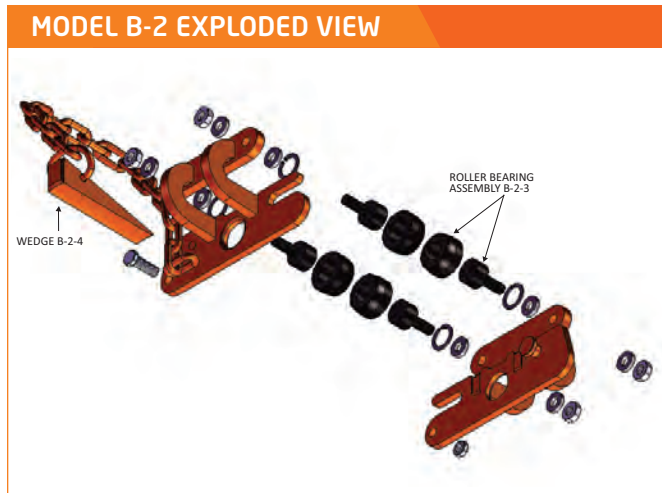


Model B-2

Trolley Clamp

The **Model B-2** is a beam trolley clamp that provides connection of a hoist or chain fall to an overhead beam and enables it to be moved along the beam as the necessity arises. Equipped with four heavy duty rollers, the Model B-2, with load attached, can be moved along any length of American Standard or wide flange beams. The fluted tool steel locking wedge permits the clamp to be temporarily or permanently locked at a particular position along the beam.



MODEL B-2 SPECIFICATIONS (in inches)

Part Number	Flange Width A	B	C	D	E	F	J	K	L	R	T	U	Weight (lbs.)
1 Tons Capacity													
B-2-01.00-A	1-1/2 – 4	5-3/4	7-1/4	8-3/4	2-9/16	1-1/2	6-3/4	7/8	5/8	2	3/4	3/4	18
B-2-01.00-B	2 – 6	7-5/8	10-1/2	8-3/4	3-3/8	1-1/2	8-3/4	1-1/4	1-1/8	3-1/2	3/4	3/4	28
B-2-01.00-C	4 – 12	8-3/16	18	8-3/4	3-15/16	1-1/2	8-3/4	1-13/16	1-1/8	3-1/2	3/4	3/4	38
3 Tons Capacity													
B-2-03.00-A	4 – 6	10-1/4	12-1/4	11-1/4	4	2-1/4	12-1/4	1-1/4	1-1/2	5-1/8	3/4	7/8	65
B-2-03.00-B	4 – 12	10-7/8	19	11-1/4	4-5/8	2-1/4	12-1/4	1-7/8	1-1/2	5-1/8	3/4	7/8	78
5 Tons Capacity													
B-2-05.00-A	4 – 8	13-7/16	16-1/2	16-1/2	5	3-1/8	15-1/2	1-1/4	1-1/2	6	1	1	92
B-2-05.00-B	4 – 14	13-7/16	22-1/2	16-1/2	5	3-1/8	15-1/2	1-7/8	1-1/2	6	1	1	130
8 Tons Capacity													
B-2-08.00-A	6 – 12	18-1/16	21-1/8	18-5/8	6-1/2	3-1/2 x 4-5/8	21	2-1/2	1-1/2	8	1	1-7/16	256
B-2-08.00-B	6 – 17	18-1/16	27	18-5/8	6-1/2	3-1/2 x 4-5/8	21	2-1/2	1-1/2	8	1	1-7/16	332
B-2-08.00-C	6 – 24	18-1/16	35	18-5/8	6-1/2	3-1/2 x 4-5/8	21	2-1/2	1-1/2	8	1	1-7/16	355
12 Tons Capacity													
B-2-12.00-A	6 – 12	18-1/16	22-1/2	18-5/8	6-1/2	3-1/2 x 4-5/8	21	2-1/2	1-1/2	8	1-1/4	1-7/16	275
B-2-12.00-B	6 – 17	18-1/16	28-1/2	18-5/8	6-1/2	3-1/2 x 4-5/8	21	2-1/2	1-1/2	8	1-1/4	1-7/16	295
B-2-12.00-C	6 – 24	18-1/16	96-1/2	18-5/8	6-1/2	3-1/2 x 4-5/8	21	2-1/2	1-1/2	8	1-1/4	1-7/16	345

Consult factory for possible larger capacities. SPECIFICATIONS ARE SUBJECT TO CHANGE WITHOUT NOTICE.