



The Caldwell Group, Inc.

5055 26th Avenue (815) 229-5667
Rockford, IL 61109 Toll Free (800) 628-4263
www.caldwellinc.com Fax (815)-229-5686

INSTRUCTION MANUAL FOR Model 28 – Chlorine Cylinder Lifting Beam

Your new Model 28 Chlorine Cylinder Lifting Beam will only support loads up to its rated capacity when loaded correctly. The Model 28 Chlorine Cylinder Lifting Beam is a load supporting lifter complying with ASME B30.20 BTH-1 Design Category B and Service Class 2, which is for specific tasks withstanding forces based on the unit's rated capacity. Use the following guidelines for your protection, and for optimal operation of your equipment. The safety precaution list below is not necessarily all-inclusive. The owner/user is responsible for understanding and acting according to industry standards and any other local, city, state or federal regulations. Refer to the Manufacturer's Instruction Manual for product and safety information on other attachments, components, or both used with your lifting equipment.

1. **DO NOT EXCEED RATED CAPACITY.**
2. **DO NOT** lift or support people.
3. **DO NOT** lift over people.
4. **DO NOT** lift higher than necessary.
5. **DO NOT** leave suspended load unattended.
6. **DO** inspect the lifter for damage or excess wear before each use. Check for structural bending and cracks, excess wear at load points and pins, cracked or broken welds, deformed hardware. If inspection reveals any defect(s), remove the lifting device from service, and tag "Out of Service". Immediately notify your Safety administrator or Supervisor to contact The Caldwell Group regarding any defect.
7. **DO** contact The Caldwell Group to replace worn or damaged tags and/or decals.

Loading Operation

1. **See Tag & Decal Location page 3**, Know the rated capacity of the beam and the beam weight (located on the Caldwell Nameplate/ID tag).
2. Confirm that the pins are through both channels and secure in the hooks before lifting.
3. **See Figure 2 (Enlarged Detail)**, Know that each Chlorine Cylinder flange is securely resting on the full length of the hook arm (within the spread limits, 80-3/4" to 82-1/4").
4. **See Figure 1**, Prevent tilting of the Model 28 Chlorine Cylinder Lifting Beam and the load, by positioning the load's center of gravity in-line with the center of the crane hook.
5. Perform a test lift of several inches to verify the load is properly balanced and the lifter is level/horizontal.
6. **See Figure 1 & 2**, the Lifting Beam is level/horizontal and both of the Chlorine Cylinder flanges are securely resting on the full length of both hook arms, proper lifting.
7. **See Figure 3**, the Lifting Beam is not level/horizontal and the Chlorine Cylinder Flange is resting on the tip of **ONLY** one hook arm, improper lifting.

PROPER LIFTING

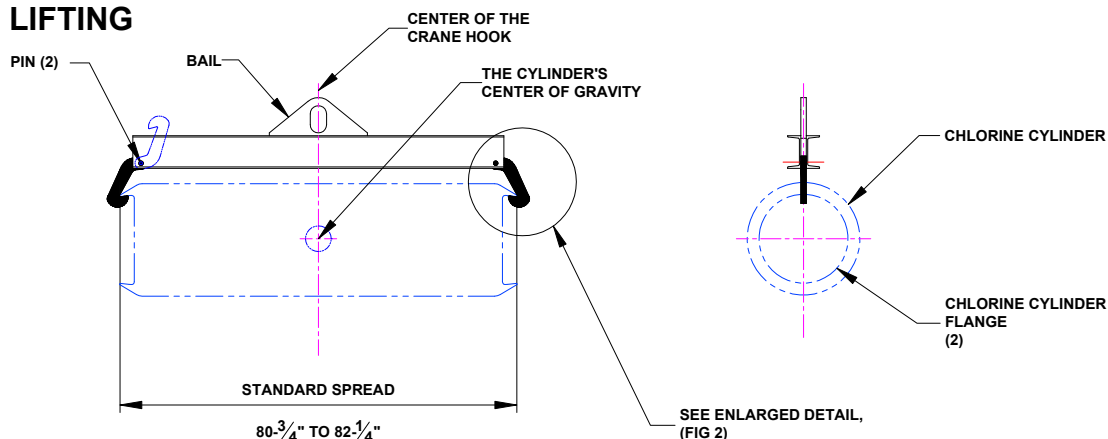


Figure 1



The Caldwell Group, Inc.

5055 26th Avenue (815) 229-5667
Rockford, IL 61109 Toll Free (800) 628-4263
www.caldwellinc.com Fax (815)-229-5686

INSTRUCTION MANUAL FOR Model 28 – Chlorine Cylinder Lifting Beam

PROPER LIFTING

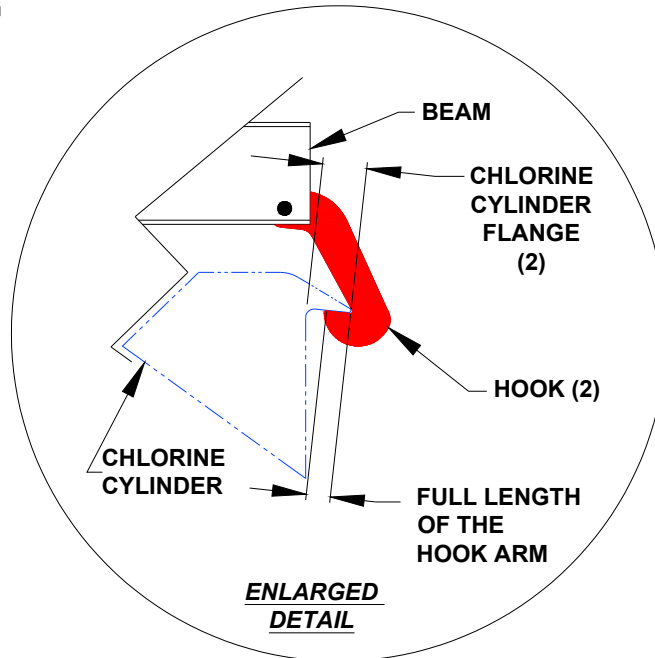


Figure 2

IMPROPER LIFTING

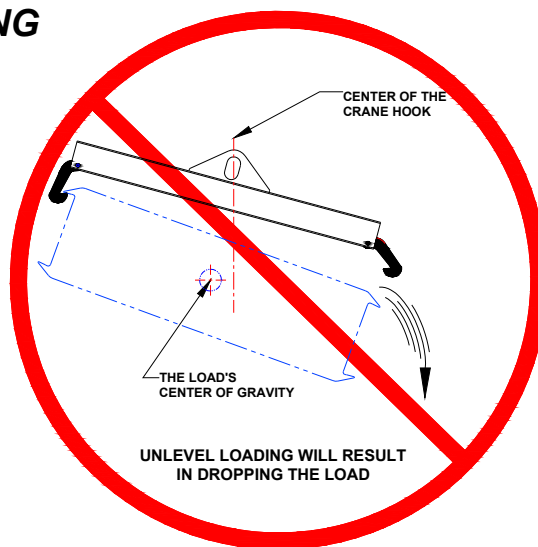


Figure 3

MODIFICATIONS TO YOUR LIFTING EQUIPMENT WITHOUT PRIOR WRITTEN APPROVAL FROM
THE CALDWELL GROUP, INC. VOIDS YOUR WARRANTY.
REFER TO ASME 30.20 REGARDING LIABILITY OF REPAIRED OR MODIFIED LIFTER.



The Caldwell Group, Inc.

5055 26th Avenue (815) 229-5667
Rockford, IL 61109 Toll Free (800) 628-4263
www.caldwellinc.com Fax (815)-229-5686

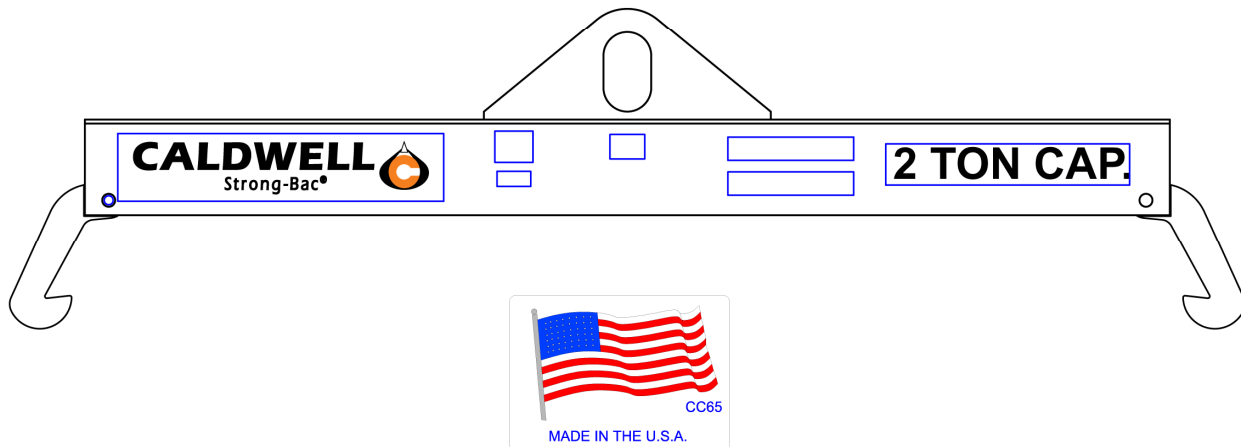
Model 28 Chlorine Cylinder Lifting Beam

ID Tag and Product Safety Labels

The Caldwell Group
PH 800-628-4263

Rated Cap Lbs
Model No
Serial No
Unit Wt Lbs

ASME B30.20 BTH 1
Design Category B Service Class



If the Identification Tag or Product Safety Labels are damaged or missing, contact The Caldwell Group for complimentary replacement.