

**TECHNICAL DATA SHEET FOR  
MODEL 21 Rotating Lifting Beam**

Your new Caldwell beam is classified as a 'Structural Lifting Beam'. This means it will support loads up to its rated capacity whether hooked directly or by means of load slings

By observing the following operational procedures you can assure reliable handling of the loads you wish to lift.

1. INSPECT THE LIFTER FOR DAMAGE OR EXCESS WEAR BEFORE EACH USE. Check for structural bending, excess wear at load points and pins, cracked or broken welds, or deformed hooks. If this inspection reveals any defect place the unit out of service and report this to the designated person.
2. NEVER EXCEED RATED CAPACITY
3. POSITION LIFTER SO THAT LOAD IS PROPERLY BALANCED AND LEVEL.
4. DO NOT LIFT PEOPLE. DO NOT LIFT HIGHER THAN NECESSARY. DO NOT LEAVE LOAD UNATTENDED WHEN SUSPENDED.

**Notes on Operation:**

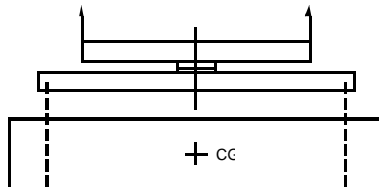
**Safety Rules**

1. NEVER EXCEED THE RATED CAPACITY
2. NEVER EXCEED THE MINIMUM AND MAXIMUM COIL WIDTH
3. INSPECT FOR EXCESS WEAR OR DAMAGE BEFORE EACH USE
4. ALWAYS INSPECT FOR LEVEL LIFT.

Proper rigging of the beam is required for both safety and long life of bearings and motor drive unit.

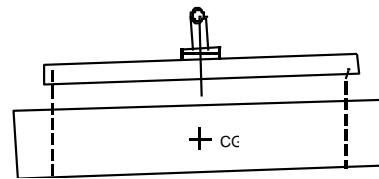
**Proper Rigging**

Beam and Load Hang Level  
Maximum Lift Stability  
Center of Gravity Under Rotation Centerline



**Improper Rigging**

Beam and Load are Not Level  
Unstable Lift  
Center of Gravity Not Under Rotation Centerline



**Model Number** \_\_\_\_\_

**Top Span** \_\_\_\_\_

**Rated Capacity** \_\_\_\_\_

**Bottom Span** \_\_\_\_\_

**NOTE: IF TAGS OR DECALS BECOME DIFFICULT TO READ, CONTACT THE CALDWELL GROUP FOR REPLACEMENT TAGS AND DECALS.**

**ASME B30.20-BTH-1: Design Category B, Service Class 2**